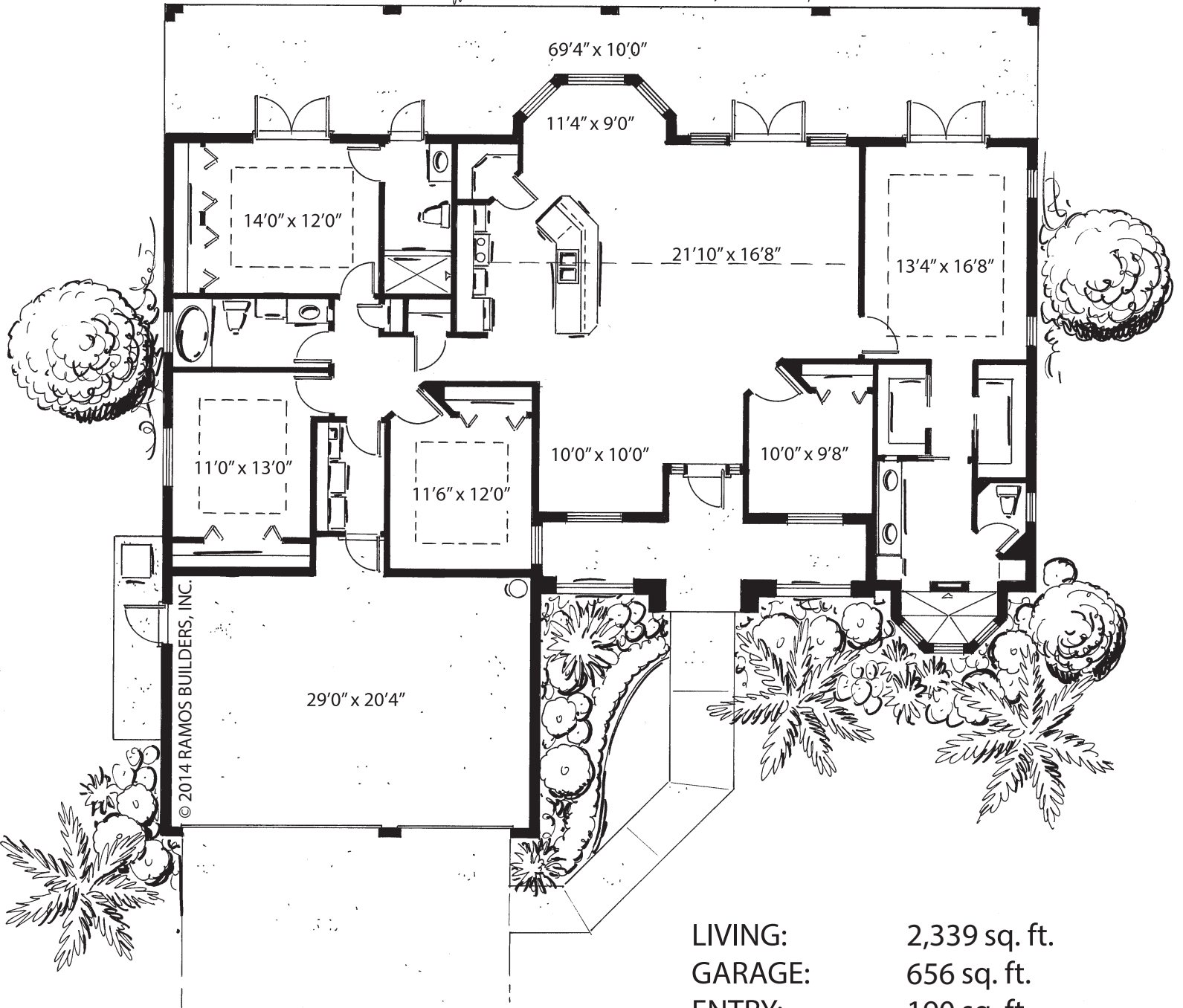




© 2014 RAMOS BUILDERS, INC.

LIVING:	2,339 sq. ft.
GARAGE:	656 sq. ft.
ENTRY:	190 sq. ft.
COV. PATIO:	644 sq. ft.
TOTAL:	3,829 sq. ft.

The Palma



LIVING:	2,339 sq. ft.
GARAGE:	656 sq. ft.
ENTRY:	190 sq. ft.
COV. PATIO:	644 sq. ft.
TOTAL:	3,829 sq. ft.

Due to Ramos Builders' continuous commitment towards improvement, we reserve the right to modify plans, amenities, and product design. All plans, dimensions and information are approximate and subject to change without notice. Please refer to your purchase agreement and homeowner documents for correct representations.